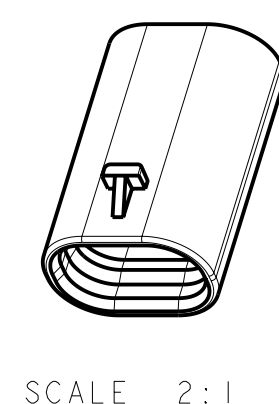




POLARIZATION VIEWS



CONSTRUCTION BELOW THIS SURFACE
IS NOT CONTROLLED BY EWCAP.
NO PLASTIC FEATURES MAY
EXTEND ABOVE THIS SURFACE

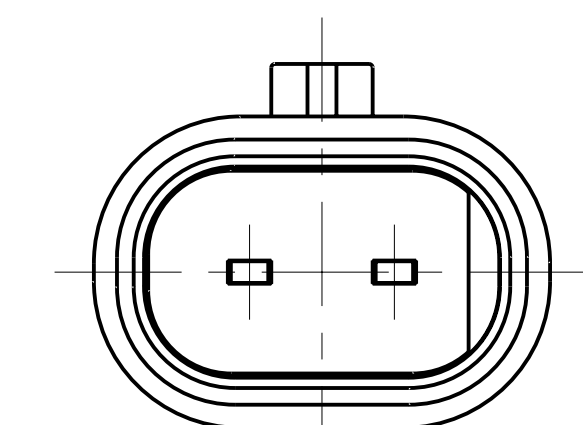


NOTES: UNLESS OTHERWISE SPECIFIED

1. ALL DIMENSIONS SHOWN IN MILLIMETERS.
2. DIMENSIONING AND TOLERANCING PER ASME Y14.5M-1994
3. RADIi ON ALL CORNERS SHOWS SHARP OR ALL UNSPECIFIED RADIi: 0.25 EXCEPT AS NOTED.
4. A FULL SHROUD ON THE MATING CONNECTOR IS REQUIRED TO ENSURE THAT THE CONNECTOR-HEADER POLARIZATION FEATURES (OPTIONS A THRU F) WILL FUNCTION. THE FULL SHROUD ALSO PREVENTS SCOOP DAMAGE TO THE HEADER PIPES. PLEASE REFER TO THE CONCEPTUAL DESIGN GUIDE LINES* FOR ADDITIONAL INFORMATION.
5. REFER TO USCARTEAMS/PART LIST AS FOUND ON WEBSITE [HTTP://WWW.USCARTEAMS.ORG](http://www.uscarteams.org)
6. FOR BLADE BASE MATERIAL, PLATING AND PROCESS LUBRICANT SEE EWCAP DRW. NO. EWCAP-001
7. THIS PART HAS BEEN PREVIOUSLY DESIGNED AND TOOLED WITH THE DATUM REFERENCES AS SHOWN. THE DATUM REFERENCE USED IN THIS DRAWING IS THE DATUM LOCATED OVER THE EWCAP DRAWING GUIDELINE DATUM REFERENCE REQUIREMENT.

NOTICE

THIS DRAWING, OR PORTIONS OF IT, ARE CONTROLLED BY THE ELECTRICAL WIRING COMPONENTS APPLICATION PARTNERSHIP CONSORTIUM (EWCA) CONSORTIUM FOR AUTOMOTIVE RESEARCH (USCAR). USCAR IS A PARTNERSHIP BETWEEN DAIMLERCHRYSLER CORPORATION, FORD MOTOR COMPANY AND GENERAL MOTORS CORPORATION. NO CHANGE TO A EWCAP CONTROLLED PORTION OF THIS DRAWING, INCLUDING A RECORD CHANGE, IS TO BE PROVIDED, FOR ANY REASON, BY THE EWCA MEMBER COMPANY, WITHOUT THE WRITTEN AUTHORIZATION OF THE OTHER TWO EWCA MEMBER COMPANIES. BEFORE OBTAINING ALL NECESSARY APPROVALS WITHIN THAT COMPANY PRIOR TO SIGNING FOR APPROVAL OF THE CHANGES TO THE EWCAP CONTROLLED PORTION OF THIS DRAWING EITHER ANY EWCAP CONTROLLED PORTION OF THIS DRAWING OR ANY ASSOCIATED TOOLING BEFORE RECEIVING AN AUTHORIZED SIGNATURE AND AUTHORITY FROM EACH EWCA MEMBER COMPANY. REFERENCE TO THE SIGNED APPROVAL FORM MUST BE ENTERED IN THIS DRAWING'S

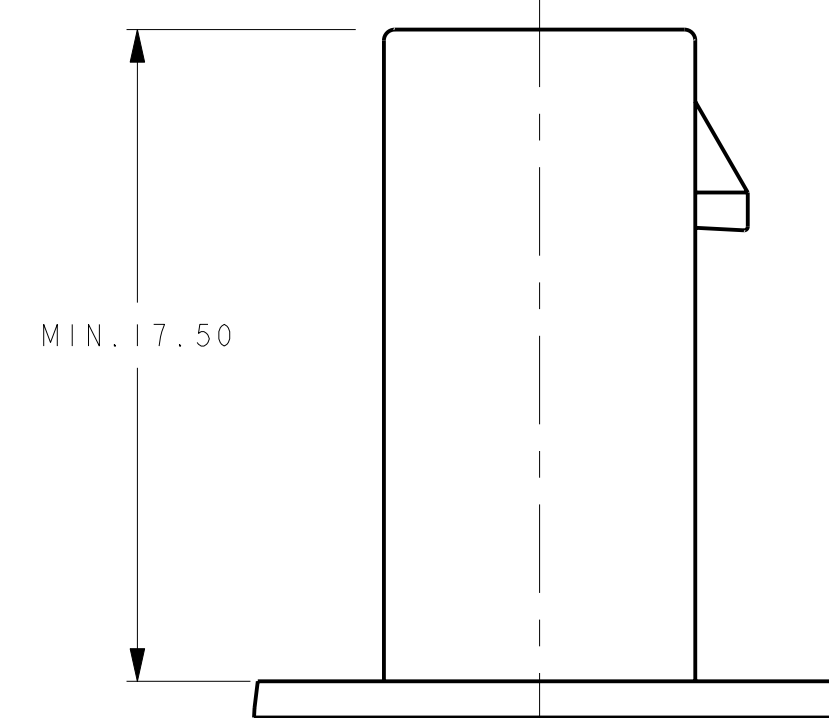


KEYING OPTION Z

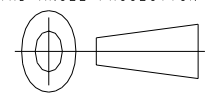

THIS UNIVERSAL KEY OPTION IS NOT APPROVED BY USCAR/EWCA FOR USE ON ORIGINAL EQUIPMENT DEVICES. HOWEVER, THIS KEY OPTION COULD BE ENCOUNTERED ON OLDER DEVICES.

SECTION B-B

PROVIDED FOR INFORMATIONAL PURPOSES ONLY



MIN. 17.50

082	B	ADDED KEYING OPTIONS E & F AND BELOW DATUM A		05-18-10	SR	FAH
-	A	RELEASED		01-08-09	SR	FAH
CHANGE SERIAL NUMBER	LET	REVISION RECORD		DATE	DWN	CHK
TOLERANCES (UNLESS OTHERWISE SPECIFIED):				 THIRD ANGLE PROJECTION		
DIMENSIONS ARE IN MILLIMETERS						
ANGLES = 2°						
X . X X 0 . 2 5		X . XX 0 . 1 0				
						
SCALE 5:1		DRAWN BY RANGARAJAN		CHECKED BY FRANK HOLUB		DATE 11-19-08
DIRECT CONNECT INTERFACE 2 WAY (1 X 2) 1.2MM SEALED MALE						
SHEET _____ DRAWING NUMBER _____ SIZE _____ DO NOT SCALE DRAWING REVISION LEVEL _____ 1 OF 1 120-S-002-1-Z02 COMPUTER AIDED DRAWING B						

